

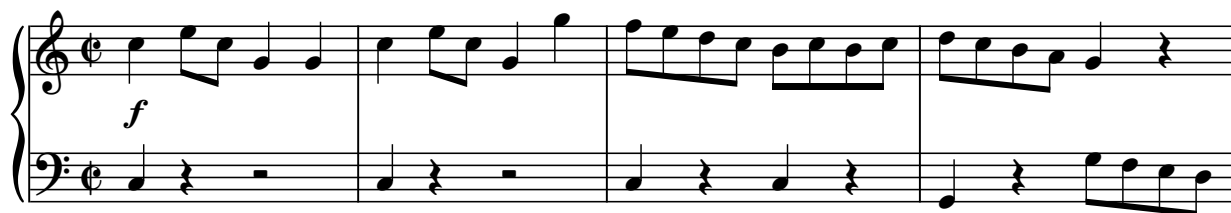
# Sonatina n.1

Op.36



M.Clementi

Allegro ♩ = 160



(16)

*p*

*b*

*q*

*s*

(20)

*f*

*b*

*q*

(24)

*p*

*q*

(28)

*cresc.*

*f*

(32)

*f*

(36)

*f*

*q*

Andante ♩ = 62

First system, measures 1-3. Treble clef: Measure 1 has a whole note G4. Measure 2 has a whole note A4. Measure 3 has a whole note B4 with a trill (tr) and a wavy line. Bass clef: Measures 1-3 feature a continuous eighth-note triplet accompaniment.

Second system, measures 4-7. Treble clef: Measures 4-6 contain eighth-note triplet patterns. Measure 7 has a half note G4 with a wavy line. Bass clef: Measures 4-6 have eighth-note triplet accompaniment. Measure 7 has a half note G4 with a wavy line and the marking *cresc.*

Third system, measures 8-11. Treble clef: Measure 8 has a half note G4 with a wavy line, marked *fz* and *p*. Measures 9-10 have eighth-note triplet patterns, marked *cresc.*. Measure 11 has a half note G4 with a wavy line, marked *f*. Bass clef: Measures 8-11 have eighth-note accompaniment.

Fourth system, measures 12-15. Treble clef: Measure 12 has a half note G4 with a wavy line. Measures 13-14 have eighth-note triplet patterns, marked *fz* and *p*. Measure 15 has a half note G4 with a wavy line, marked *fz* and *p*. Bass clef: Measures 12-15 have eighth-note accompaniment.

Fifth system, measures 16-19. Treble clef: Measures 16-17 have eighth-note triplet patterns. Measure 18 has a half note G4 with a wavy line. Measure 19 has a half note G4 with a wavy line, marked *dolce*. Bass clef: Measures 16-19 have eighth-note accompaniment.

(20)

Trills (tr) and dynamics (f, dim., cresc.) are present. Measure 23 features triplets (3) and a crescendo (cresc.).

(24)

Trills (tr) and triplets (3) are present. Measure 26 ends with a fermata.

Vivace

Tempo change to Vivace. Measure 27 starts with piano (p). The piece is in 3/8 time.

(9)

Measure 33 starts with forte (f). Measure 40 ends with piano (p).

(18)

Measures 41-47 include dynamics (f, p, f) and a key signature change to one sharp (F#) in measure 46.

26

dim. *p*

This system contains measures 26 through 33. The right hand features a complex melodic line with many beamed sixteenth and thirty-second notes, including a key signature change to one sharp (F#) in measure 27. The left hand plays a steady accompaniment of eighth notes. Dynamic markings include *dim.* (diminuendo) in measure 31 and *p* (piano) in measure 33.

34

*pp*

This system contains measures 34 through 41. The right hand continues with intricate sixteenth-note patterns. The left hand plays eighth notes. A *pp* (pianissimo) marking appears in measure 34.

42

*f*

This system contains measures 42 through 49. The right hand has a mix of sixteenth-note runs and quarter notes. The left hand plays eighth notes. A *f* (forte) marking appears in measure 42.

51

*p* *f*

This system contains measures 51 through 58. The right hand features sixteenth-note patterns. The left hand plays eighth notes. Dynamic markings include *p* (piano) in measure 51 and *f* (forte) in measure 53.

59

*p* *f*

This system contains measures 59 through 64. The right hand has sixteenth-note runs. The left hand plays eighth notes. Dynamic markings include *p* (piano) in measure 59 and *f* (forte) in measure 61.

65

*ff*

This system contains measures 65 through 70, ending with a double bar line. The right hand has a melodic line with some rests. The left hand plays eighth notes. A *ff* (fortissimo) marking appears in measure 66.